

MAPLE OVENS

# 1021 PE COMBI OVEN



# MAPLE

RIMASEE CORP.

---

1500 Grand Concourse Suite 41B,  
Bronx, NY 10457  
(347) 809 3544 / (646) 919 2500

[www.maple-ovens.com](http://www.maple-ovens.com)  
[info@maple-ovens.com](mailto:info@maple-ovens.com)



1021 PE Combi Oven



CODE: 925913630

## Technical features

Outside Dimensions:	36 1/4" L 39 3/4" W 45 1/4" H
Space Between Trays:	3 1/8"
Trays:	20 Trays GN 1/1 / 10T GN2/1
Power:	24 KW - 63 Amps 3PH / 109 1PH
Weight:	289 lbs
Max Temperature:	518 °F
Power Supply:	230 V ~ 3PH + PE   230 V ~ 1PH + N + PE   50-60 Hz

## Equipment

Capacitive Touch screen 7"	6 Cooking modes	5 Fan speeds
LED lighting	Core probe	HACCP register
Pre-heating option	Controlled steam injection (%)	Online collection of recipes
Cooling system	Fan inversion system	Multi-timer tray cooking end
10 Phases for cooking	Multipoint probe	Glass opening for cleaning
Delayed cooking programming	Error reporting	USB port

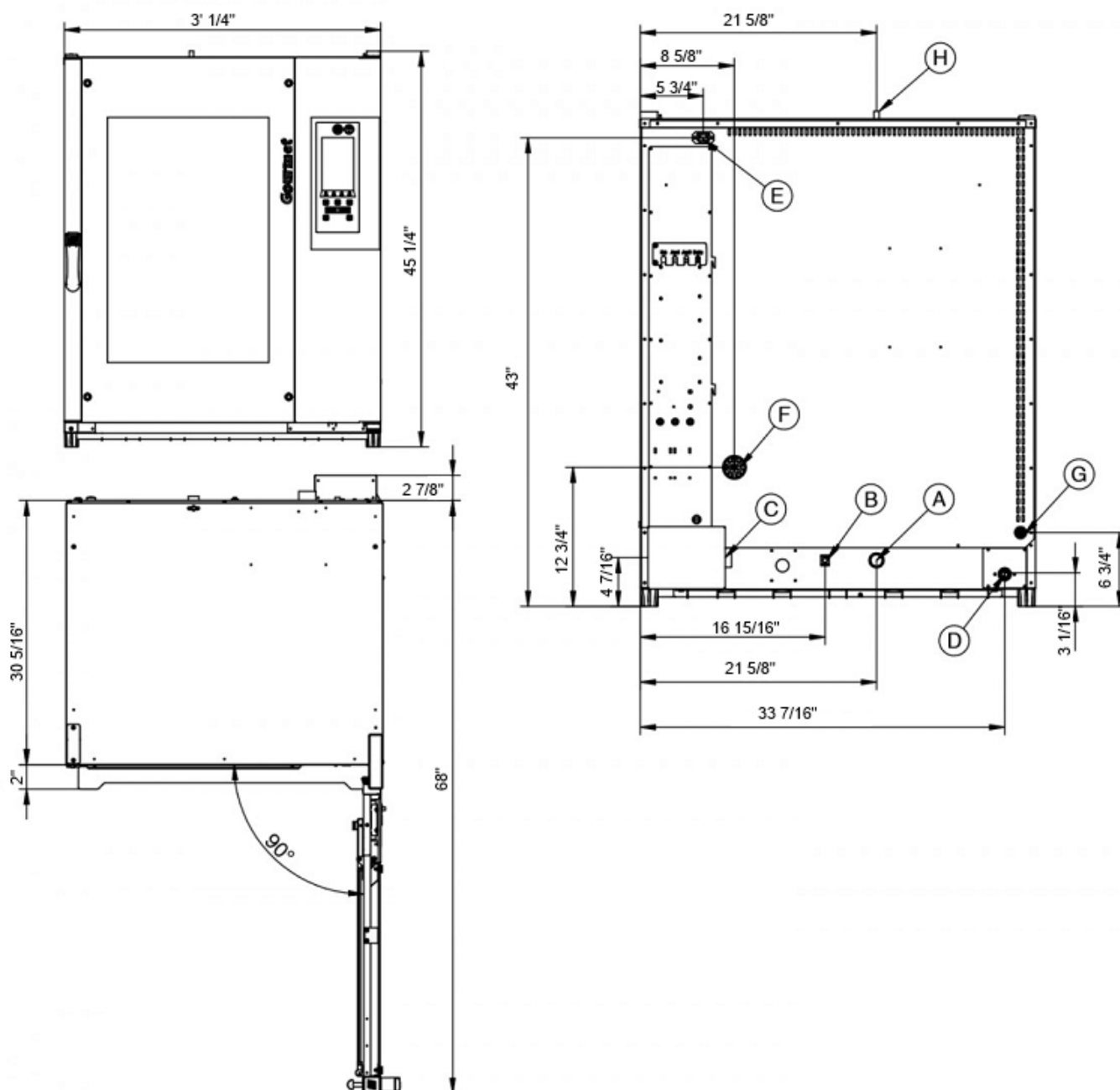
## Accessories

Cabinets, Blast chillers, Exhaust & draining, Cleaning & purification, Control tools, Stands & supports, Trays

## 1021 PE Combi Oven

CODE: 925913630

## Spec Drawing - Electrical Supply



## Legend

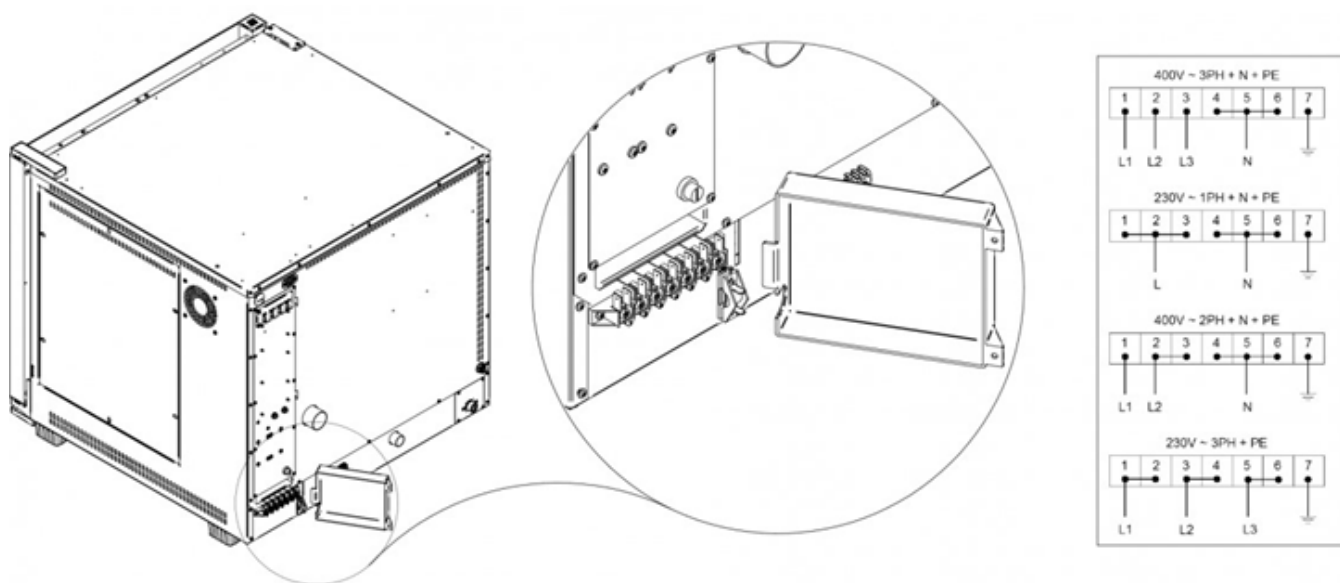
- A - Drain liquid  $\varnothing$  30mm
- B - Equipotential terminal comb
- C - Electric supply
- D - Water inlet  $3/4''$
- E - Extracting hood supply
- F - Steam exhaust  $\varnothing$  50mm
- G - Inlet for washing kit  $\varnothing$  8mm
- H - Depressurizer  $\varnothing$  12mm



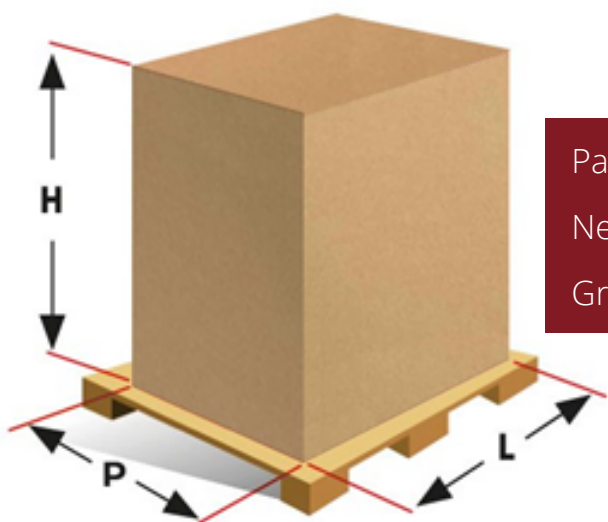
## 1021 PE Combi Oven

CODE: 925913630

### Connections



### Packaging



Packaging Size: 39 3/8" L 39 3/8" P 51 3/16" H

Net Weight: 289lbs

Gross Weight: 311lbs

1500 Grand Concourse Suite 41B,  
Bronx, NY 10457  
(347) 809 3544 / (646) 919 2500



www.maple-ovens.com  
info@maple-ovens.com