

MAPLE OVENS

511 CE COMBI OVEN

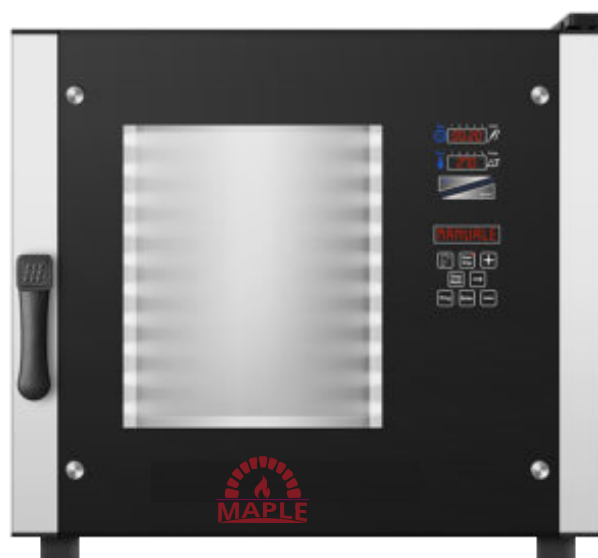


MAPLE

RIMASEE CORP.

1500 Grand Concourse Suite 41B,
Bronx, NY 10457
(347) 809 3544 / (646) 919 2500

www.maple-ovens.com
info@maple-ovens.com



511 CE Combi Oven

CODE: 925904620

Technical features

Outside Dimensions:	28 1/8" L 31 1/2" W 26 3/8" H
Space Between Trays:	2 9/16"
Trays:	5 Trays GN 1/1
Power:	5.5 KW - 25 Amps
Weight:	110 lbs
Max Temperature:	518 °F
Power Supply:	230 V ~ 3PH + PE 230 V ~ 1PH + N + PE 50-60 Hz

Equipment

Touch screen	6 Cooking modes	5 Fan speeds
LED lighting	Core probe	HACCP register
Pre-heating option	Controlled steam injection (%)	Online collection of recipes
Cooling system	Fan inversion system	Multi-timer tray cooking end
10 Phases for cooking	Multipoint probe	Glass opening for cleaning
Delayed cooking programming	Error reporting	USB port

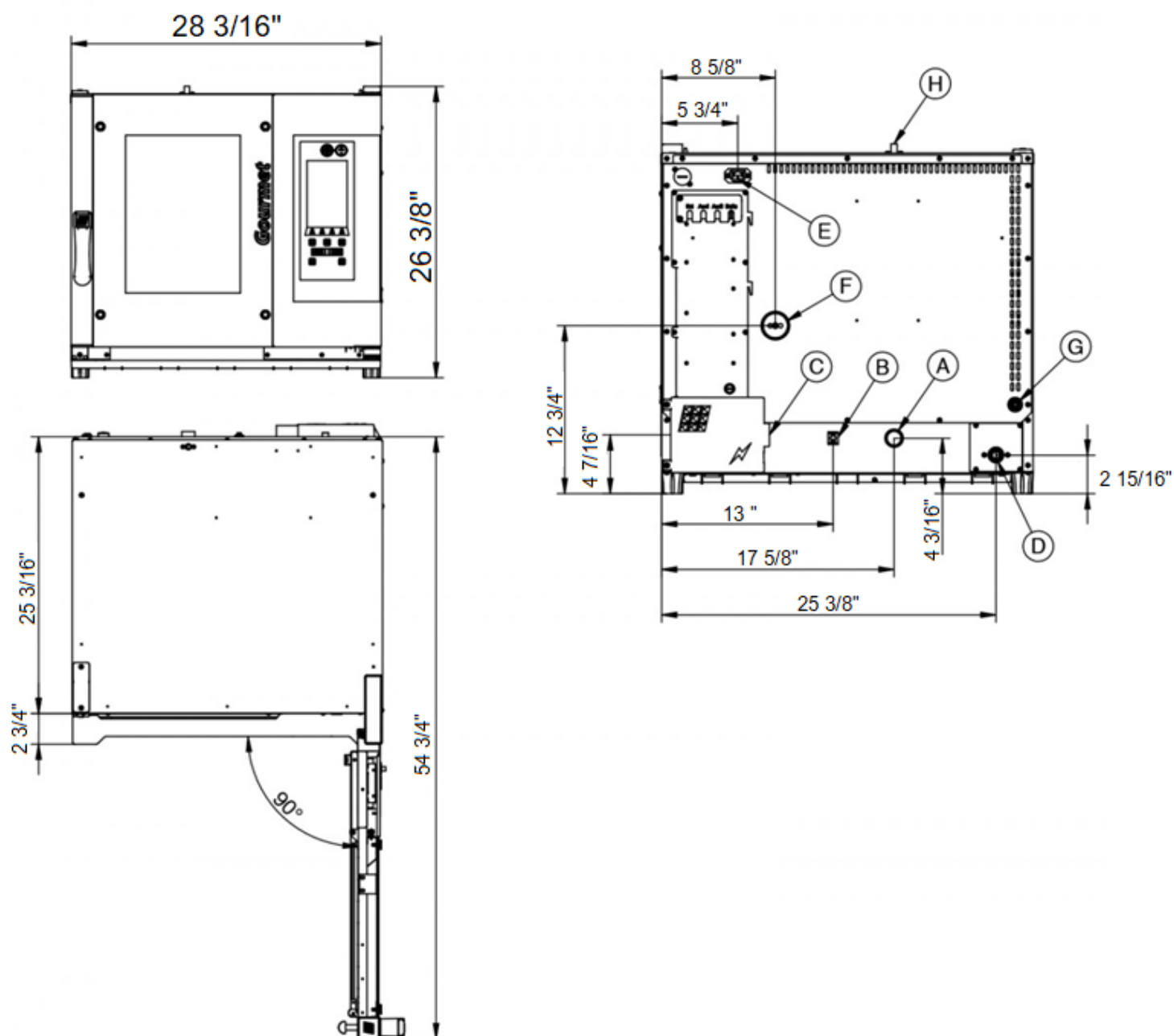
Accessories

Cabinets, Blast chillers, Exhaust & draining, Cleaning & purification, Control tools, Stands & supports, Trays

511 CE Combi Oven

CODE: 925904620

Spec Drawing - Electrical Supply



Legend

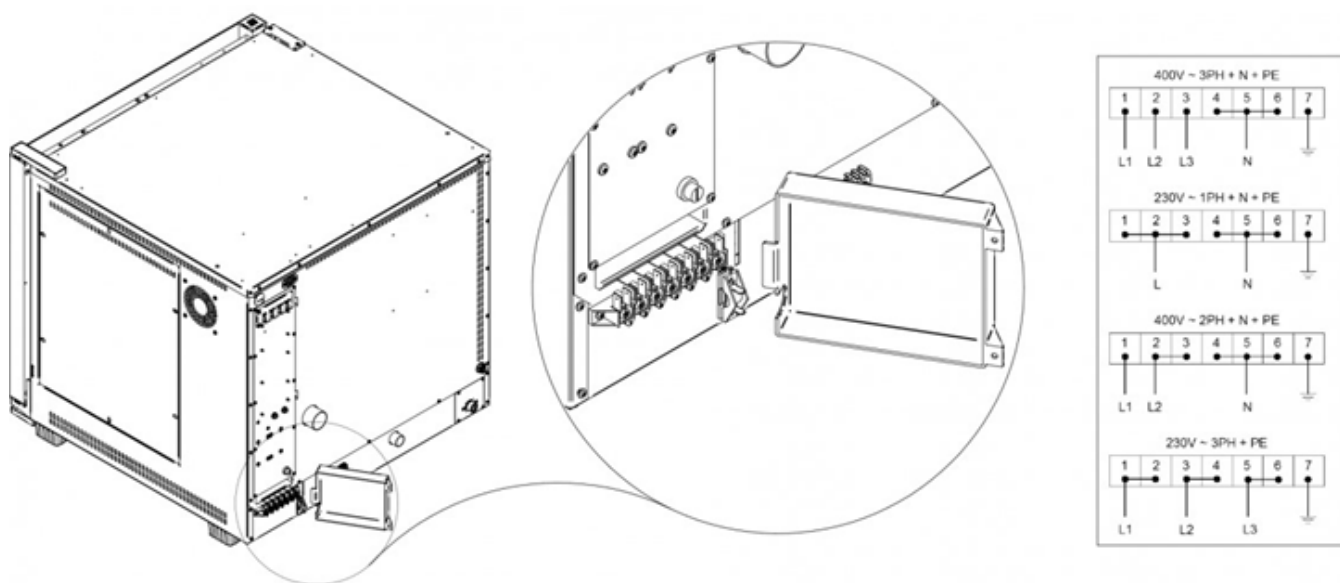
- A - Drain liquid \varnothing 30mm
- B - Equipotential terminal comb
- C - Electric supply
- D - Water inlet $\frac{3}{4}$ "
- E - Extracting hood supply
- F - Steam exhaust \varnothing 50mm
- G - Inlet for washing kit \varnothing 8mm
- H - Depressurizer \varnothing 12mm



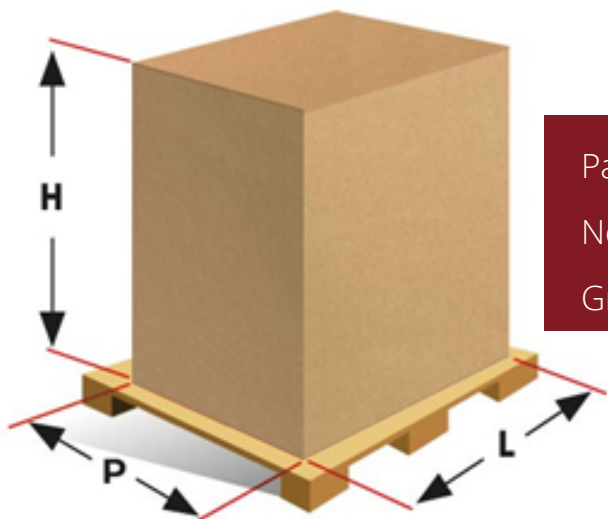
511 CE Combi Oven

CODE: 925904620

Connections



Packaging



Packaging Size: 31 1/8" L 34 1/4" P 32 11/16" H

Net Weight: 142 lbs

Gross Weight: 161 lbs

1500 Grand Concourse Suite 41B,
Bronx, NY 10457
(347) 809 3544 / (646) 919 2500



www.maple-ovens.com
info@maple-ovens.com